



Specification Sheets



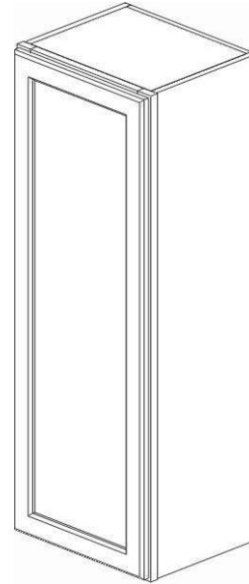


Spec Sheets

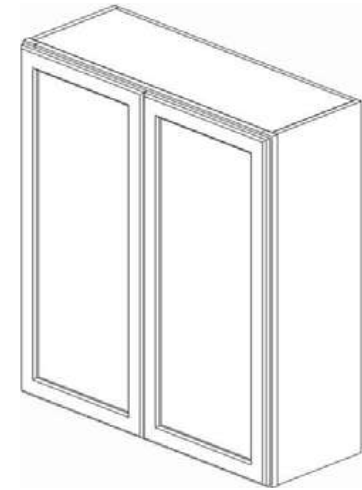


Wall Cabinets B = Butt doors. Two doors that open towards each other not separated by a center stile.

Item#	Width	Height	Depth	Door	Drawer	Shelf
W0930	9"	30"	12"	1	0	2
W1230	12"	30"	12"	1	0	2
W1530	15"	30"	12"	1	0	2
W1830	18"	30"	12"	1	0	2
W2130	21"	30"	12"	1	0	2
W2430B	24"	30"	12"	2	0	2
W2730B	27"	30"	12"	2	0	2
W3030B	30"	30"	12"	2	0	2
W3330B	33"	30"	12"	2	0	2
W3630B	36"	30"	12"	2	0	2
W0936	9"	36"	12"	1	0	2
W1236	12"	36"	12"	1	0	2
W1536	15"	36"	12"	1	0	2
W1836	18"	36"	12"	1	0	2
W2136	21"	36"	12"	1	0	2
W2436B	24"	36"	12"	2	0	2
W2736B	27"	36"	12"	2	0	2
W3036B	30"	36"	12"	2	0	2
W3336B	33"	36"	12"	2	0	2
W3636B	36"	36"	12"	2	0	2
W0942	9"	42"	12"	1	0	3
W1242	12"	42"	12"	1	0	3
W1542	15"	42"	12"	1	0	3
W1842	18"	42"	12"	1	0	3
W2142	21"	42"	12"	1	0	3
W2442B	24"	42"	12"	2	0	3
W2742B	27"	42"	12"	2	0	3
W3042B	30"	42"	12"	2	0	3
W3342B	33"	42"	12"	2	0	3
W3642B	36"	42"	12"	2	0	3



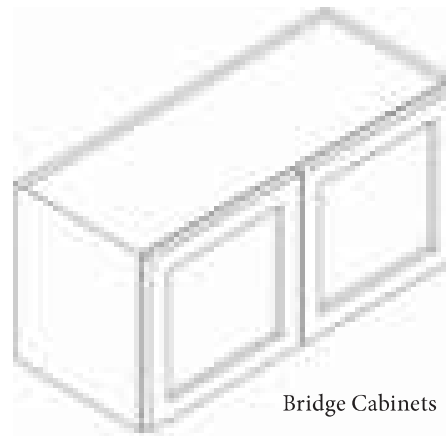
Widths of 9, 12, 15, 18, 21



Widths of 24, 27, 30, 33, 36

Bridge Cabinets B = Butt doors. Two doors that open towards each other not separated by a center stile.

Item#	Width	Height	Depth	Door	Drawer	Shelf
W3012B	30"	12"	12"	2	0	0
W3312B	33"	12"	12"	2	0	0
W3612B	36"	12"	12"	2	0	0
W361224B	36"	12"	24"	2	0	0
W2415B	24"	15"	12"	2	0	0
W3015B	30"	15"	12"	2	0	0
W301524B	30"	15"	24"	2	0	0
W3315B	33"	15"	12"	2	0	0
W331524B	33"	15"	24"	2	0	0
W3615B	36"	15"	12"	2	0	0
W361524B	36"	15"	24"	2	0	0
W2418B	24"	18"	12"	2	0	0
W3018B	30"	18"	12"	2	0	0



Bridge Cabinets

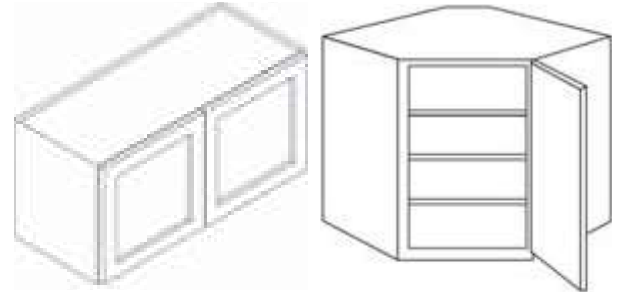


Spec Sheets



Bridge Cabinets Continued

W301824B	30"	18"	24"	2	0	0
W3318B	33"	18"	12"	2	0	0
W331824B	33"	18"	24"	2	0	0
W3618B	36"	18"	12"	2	0	0
W361824B	36"	18"	24"	2	0	0
W2424B	24"	24"	12"	2	0	1
W3024B	30"	24"	12"	2	0	1
W302424B	30"	24"	24"	2	0	1
W3324B	33"	24"	12"	2	0	1
W332424B	33"	24"	24"	2	0	1
W3624B	36"	24"	12"	2	0	1
W362424B	36"	24"	24"	2	0	1

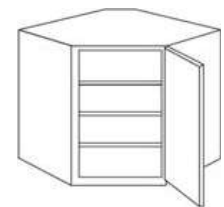


Bridge Cabinets

Item#	Width	Height	Depth	Door	Drawer	Shelf
W1512	15"	12"	12"	1	0	0
W1812	18"	12"	12"	1	0	0
W2412	24"	12"	12"	1	0	0
WDC2412	24"	12"	24"	1	0	0

Wall Diagonal Corner Cabinets

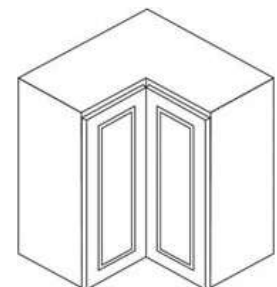
Item#	Width	Height	Depth	Door	Drawer	Shelf
WDC2430	24"	30"	12"	1	0	2
WDC2436	24"	36"	12"	1	0	2
WDC2442	24"	42"	12"	1	0	3
WDC273615	27"	36"	15"	1	0	2
WDC274215	27"	42"	15"	1	0	3



WDCXXXX

Wall Corner Cabinet

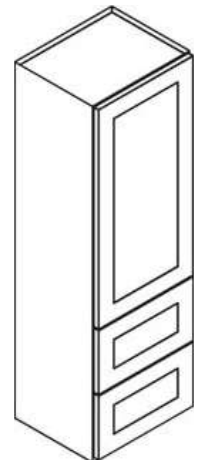
Item#	Width	Height	Depth	Door	Drawer	Shelf
WSQ2430	24"	30"	12"	Bi-Fold	0	2
WSQ2436	24"	36"	12"	Bi-Fold	0	2
WSQ2442	24"	42"	12"	Bi-Fold	0	3



WSQ24XX

Wall Cabinet - With 2 Built-In Drawers Drawers are not soft closing

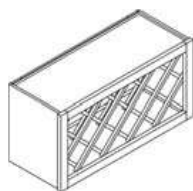
Item#	Width	Height	Depth	Door	Drawer	Shelf
W2D1848	18"	48"	12"	1	2	2
W2D1854	18"	54"	12"	1	2	2
W2D1860	18"	60"	12"	1	2	3



W2D18XX

Wine Rack

Item#	Width	Height	Depth
W3018WR	30	18	12

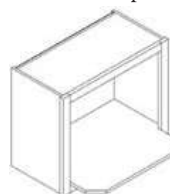


W3018WR

Microwave Oven

Item#	Width	Height	Depth
MWO3018PM-12	30"	18"	12"

Stationary Shelf is 18" Deep. Opening = 26-7/8"W x 14-1/8"H



MWO3018PM-12



Spec Sheets Wall Cabinets

Angle Wall (Door Width is 16-7/16")

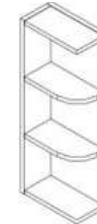
Item#	Width	Height	Depth	Door	Drawer	Shelf
AW30	12"	30"	12"	1	0	2
AW36	12"	36"	12"	1	0	2
AW42	12"	42"	12"	1	0	3



AWXX

Wall End Shelf - With Open Shelves

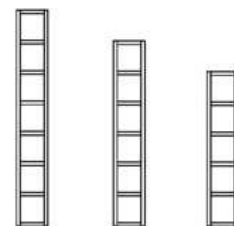
Item#	Width	Height	Depth	Door	Drawer	Shelf
WES530	5"	30"	11-1/2"	0	0	2
WES536	5"	36"	11-1/2"	0	0	2
WES542	5"	42"	11-1/2"	0	0	3



WES5XX

Wall Cubes

Item#	Width	Height	Depth	Cubes
WC630	6"	30"	12"	5 cubes
WC636	6"	36"	12"	6 cubes
WC642	6"	42"	12"	7 cubes

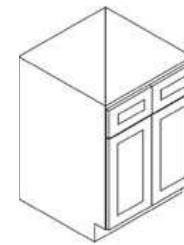
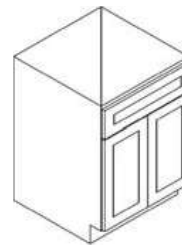


WC6XX

Spec Sheets Base Cabinets

Sink Bases B = Butt doors. Two doors that open towards each other not separated by a center stile.

Item#	Width	Height	Depth	Door	Drawer	Shelf
SB24B	24"	34-1/2"	24"	2	0	0
SB27B	27"	34-1/2"	24"	2	0	0
SB30B	30"	34-1/2"	24"	2	0	0
SB33B	33"	34-1/2"	24"	2	0	0
SB36B	36"	34-1/2"	24"	2	0	0
SB42B	42"	34-1/2"	24"	2	0	0

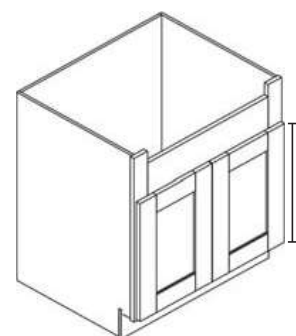


SB24B, SB27B and SB30B

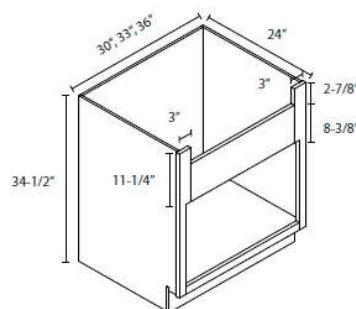
SB33B, SB36B and SB42B

Farm Sink Base B = Butt doors. Two doors that open towards each other not separated by a center stile.

Item#	Width	Height	Depth	Door	Drawer	Shelf
FSB30B	30"	34-1/2"	24"	2	0	0
FSB33B	33"	34-1/2"	24"	2	0	0
FSB36B	36"	34-1/2"	24"	2	0	0



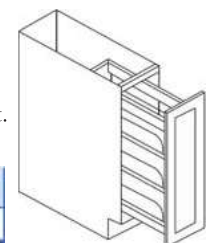
FSB30B, FSB33B, FSB36B
Fits most farm sinks



Base - Pull Out With Spice Rack

Side mount full extension drawer track, not soft closing. Unit is pre-assembled. Includes cabinet and spice rack insert. Two middle racks are adjustable.

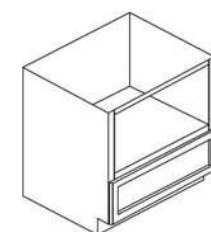
Item#	Width	Height	Depth	Door
BFP09	9"	34-1/2"	24"	1



BFP09

Microwave Base Cabinet

Opening: 26-7/8"W x 18"H
Drawer front size is 29-1/2"W x 8-13/16"H



B30MW/(30"W)

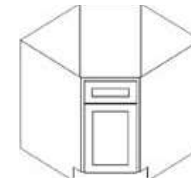
Item#	Width	Height	Depth	Doors	Drawers
B30MW/(30"W)	30"	34-1/2"	24"	0	1



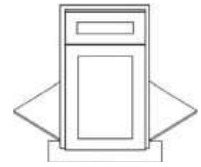
Spec Sheets Base Cabinets

Base Diagonal Corner Sink

Item#	Width	Height	Depth	Door	Drawer	Shelf
BDCF36	36"	34-1/2"	24"	1	0	1
BDCF36K-FL	36"	34-1/2"	24"	1	0	0



BDCF36



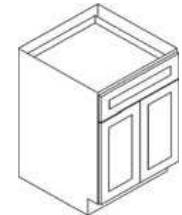
BDCF36K-FL

Base Cabinets B = Butt doors. Two doors that open towards each other not separated by a center stile.

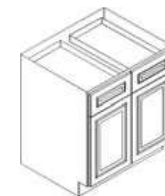
Item#	Width	Height	Depth	Door	Drawer	Shelf
B09*	9"	34-1/2"	24"	1	1	1
B12	12"	34-1/2"	24"	1	1	1
B15	15"	34-1/2"	24"	1	1	1
B18	18"	34-1/2"	24"	1	1	1
B21	21"	34-1/2"	24"	1	1	1
B24B	24"	34-1/2"	24"	2	1	1
B27B	27"	34-1/2"	24"	2	1	1
B30B	30"	34-1/2"	24"	2	1	1
B33B	33"	34-1/2"	24"	2	2	1
B36B	36"	34-1/2"	24"	2	2	1



B09-B21



B24B-B30B

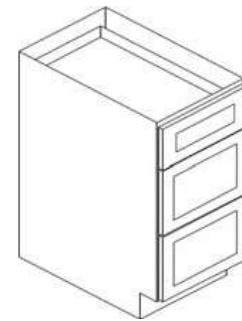


B33B and B36B

*B09 Cabinets do not come with triggers to connect with the drawer slides.

Drawer Bases

Item#	Width	Height	Depth	Door	Drawer	Shelf
DB12(3)	12"	34-1/2"	24"	0	3	0
DB15(3)	15"	34-1/2"	24"	0	3	0
DB18(3)	18"	34-1/2"	24"	0	3	0
DB21(3)	21"	34-1/2"	24"	0	3	0
DB24(3)	24"	34-1/2"	24"	0	3	0
DB30(3)	30"	34-1/2"	24"	0	3	0
DB36(3)	36"	34-1/2"	24"	0	3	0



DBXX(3)

Drawer Bases

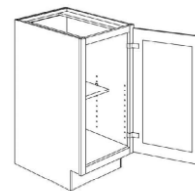
2DB15	15"	34-1/2"	24"	0	2	0
2DB18	18"	34-1/2"	24"	0	2	0
2DB24	24"	34-1/2"	24"	0	2	0
2DB30	30"	34-1/2"	24"	0	2	0
2DB36	36"	34-1/2"	24"	0	2	0



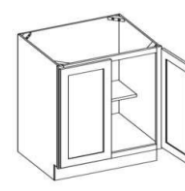
2DBXX

Full Height Door Bases

Item#	Width	Height	Depth	Door	Drawer	Shelf
FP09	9"	34-1/2"	24"	1	0	1
FP15	15"	34-1/2"	24"	1	0	1
FP18	18"	34-1/2"	24"	1	0	1
FP24	24"	34-1/2"	24"	1	0	1
FP30	30"	34-1/2"	24"	1	0	1



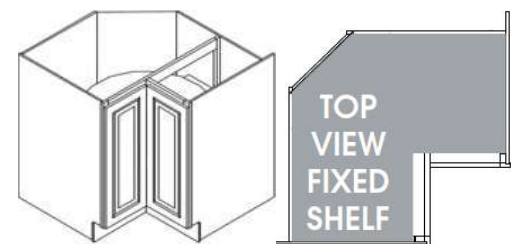
FP09, FP15, FP18



FP24, FP30

Lazy Susan Cabinets and EZ Reach Cabinet Bi-fold doors not soft closing

Item#	Width	Height	Depth	Door	Drawer	half/Tray
LS3309	33"	34-1/2"	33"	Bi-Fold	0	Tray
LS3612	36"	34-1/2"	36"	Bi-Fold	0	Tray
LS3612S (EZR3612)	36"	34-1/2"	36"	Bi-Fold	0	Shelf



LSXXXX and LS3612S



Specs Sheets Tall Cabinets

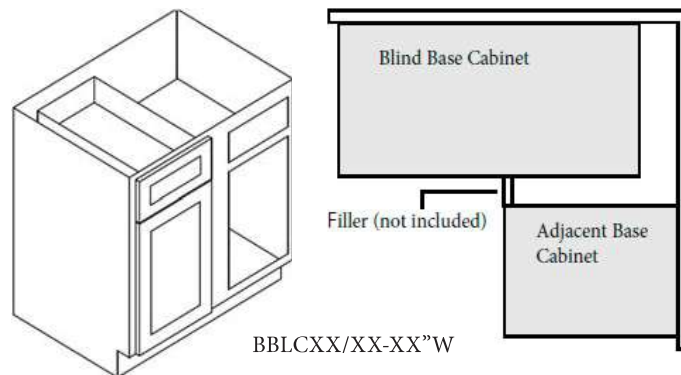


Base Blind Corner Cabinets

Item#	Width	Height	Depth	Door	Drawer	Shelf
BBLC39/42-36"W	36"	34-1/2"	24"	1	1	1
BBLC42/45-39"W	39"	34-1/2"	24"	1	1	1
BBLC45/48-42"W	42"	34-1/2"	24"	1	1	1

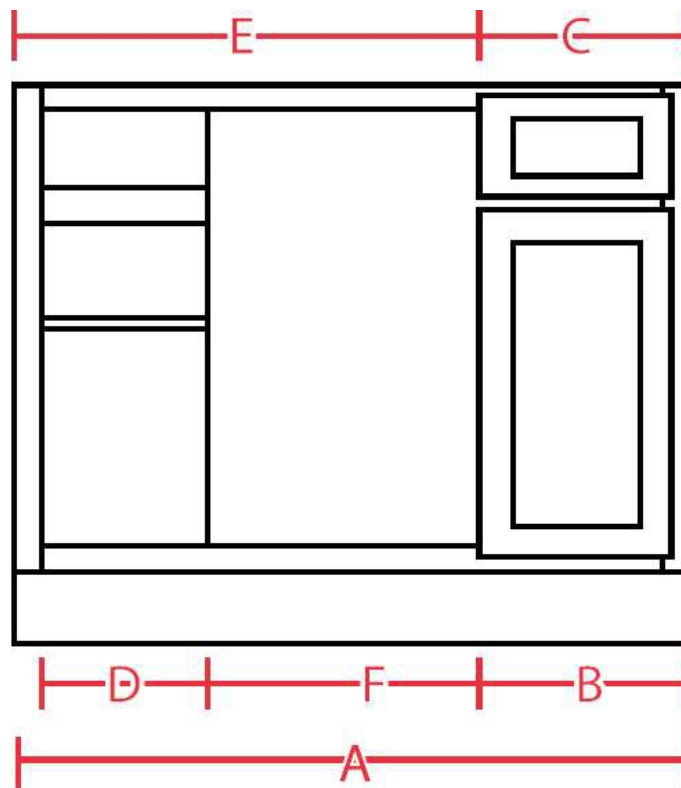
BBLC39/42-36"W

Min Pull	39"W
Max Pull	42"W
Dimension	Measurements
A	36"
B	11-3/4"
C	11-9/16"
D	8-7/8"
E	24-1/4"
F	13-3/4"



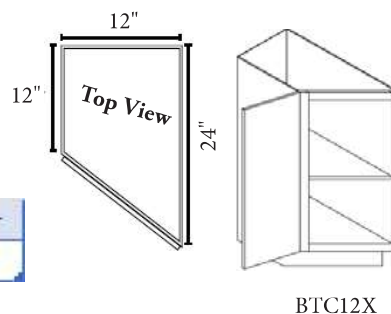
BBLC42/45-39"W

Min Pull	42"W
Max Pull	45"W
Dimension	Measurements
A	39"
B	14-3/4"
C	14-9/16"
D	11-7/8"
E	24-1/4"
F	10-3/4"



BBLC45/48-42"W

Min Pull	45"
Max Pull	48"
Dimension	Measurements
A	42"
B	17-3/4"
C	17-1/2"
D	14-7/8"
E	24-1/4"
F	7-3/4"

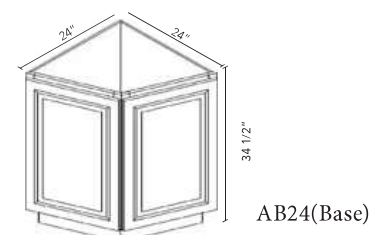


Base Transitional Cabinet Door Size 16-1/2".

Item#	Width	Height	Depth	Door
BFP09	9"	34-1/2"	24"	1

Angle Base Door Size 17-7/8". Both doors are functional.

Item#	Width	Height	Depth	Door	Drawer	Shelf
AB24 (Base)	24"	34-1/2"	24"	2	0	1





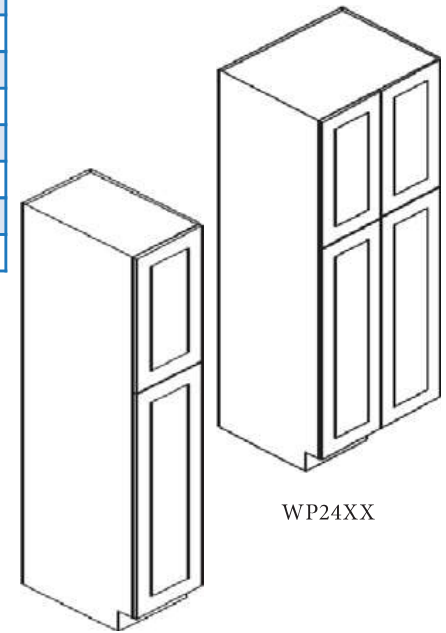
Specs Sheets Tall Cabinets



Wall Pantries Upper door height same as wall cabinets. 30"(84"), 36"(90"), 42"(96"). Bottom door 47-3/4"

Item#	Width	Height	Depth	Door	Drawer	Fixed Shelf	Adj Shelf
WP1584	15"	84"	24"	2	0	1	3
WP1590	15"	90"	24"	2	0	1	5
WP1596	15"	96"	24"	2	0	1	6
WP1884	18"	84"	24"	2	0	1	3
WP1890	18"	90"	24"	2	0	1	5
WP1896	18"	96"	24"	2	0	1	6
WP2484B	24"	84"	24"	4	0	1	3
WP2490B	24"	90"	24"	4	0	1	5
WP2496B	24"	96"	24"	4	0	1	6

Item#	Door Width	Top Door Height	Bottom Door Height
WP1584	14-1/2"	29-5/16"	49-1/4"
WP1590	14-1/2"	35-5/16"	49-1/4"
WP1596	14-1/2"	41-5/16"	49-1/4"
WP1884	17-9/16"	29-5/16"	49-1/4"
WP1890	17-9/16"	35-5/16"	49-1/4"
WP1896	17-9/16"	41-5/16"	49-1/4"
WP2484B	11-11/16"	29-5/16"	49-1/4"
WP2490B	11-11/16"	35-5/16"	49-1/4"
WP2496B	11-11/16"	41-5/16"	49-1/4"



WP15XX & WP18XX

WP24XX

Oven Cabinets

Item#	Width	Height	Depth	Door	Drawer	Shelf
OC3384B	33"	84"	24"	2	3	0
OC3390B	33"	90"	24"	2	3	0
OC3396B	33"	96"	24"	2	3	1
OM3384B	33"	84"	24"	2	1	0
OM3390B	33"	90"	24"	2	1	0
OM3396B	33"	96"	24"	2	1	1

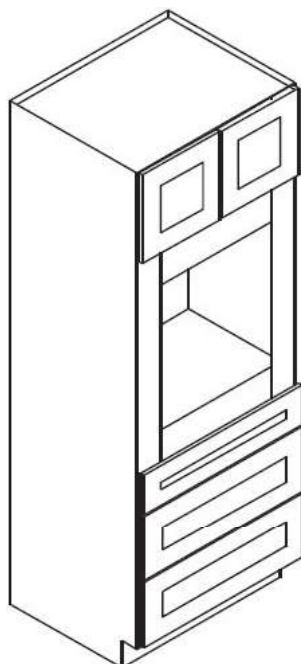
Oven Cabinet Opening Sizes

Item #	Openings	Door Height	Door Width
OC3384B	24"W x 24"H	20-5/16"	16-1/4"
OC3390B	24"W x 24"H	23-5/16"	16-1/4"
OC3396B	24"W x 24"H	29-5/19"	16-1/4"
OM3384B	24"W x 42"H	14-1/4"	16-1/4"
OM3390B	24"W x 42"H	17-1/4"	16-1/4"
OM3396B	24"W x 42"H	23-1/4"	16-1/4"

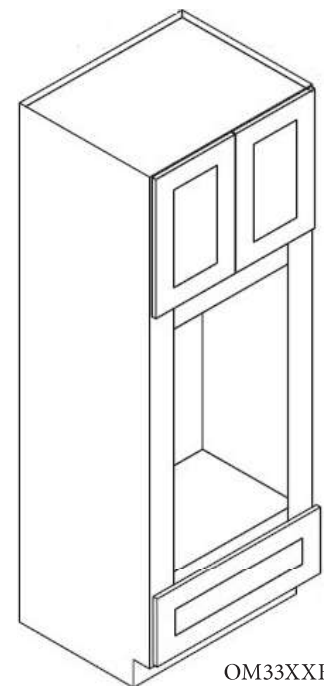
Oven Cabinet Drawer Sizes

Item#	Top Drawer Height	2nd & 3rd Drawer Height	Door Width
OC33XXB	6-1/4"	11-1/16"	32-1/2"

Item#	Drawer Height	Drawer Width
OM33XXB	11-1/4"	32-1/2"



OC33XXB



OM33XXB



Spec Sheets Decor Doors and Panels



Dishwasher Panels With 3" Return. Edge not finished without 3" return.

Item#	Width	Height	Thickness	Description
DWR33412	24"	34-1/2"	1/2"	1 Side Finish, 3" return (not attached)



DWR33412, REP24XX(3)-3/4", REP3096(3)-3/4"

Refrigerator End Panels

Item#	Width	Height	Thickness	Description
REP2484-3/4"	24"	84"	3/4"	2 Sides Finish (Banded Edge)
REP2496-3/4"	24"	96"	3/4"	2 Sides Finish (Banded Edge)
REP2484(3)-3/4"	24"	84"	3/4"	2 Sides Finish, 3" return (not attached)
REP2496(3)-3/4"	24"	96"	3/4"	2 Sides Finish, 3" return (not attached)
REP3096(3)-3/4"	30"	96"	3/4"	1 Sides Finish, 3" return (not attached)

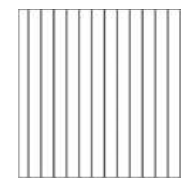


REP24XX-3/4, FBPXXXX14(1)

REP24XX-3/4", REP24XX-3/4"(3) have 2 finished edges, usable with or without 3" Return.
 REP3096(3)-3/4" has 1 finished edge, usable with or without 3" return.

Finished Back Panels and Beaded Board

FBP483614(1)	36"	48"	1/4"	1 Side Finish (Vertical Grain)
FBP369614(1)	96"	36"	1/4"	1 Side Finish (Vertical Grain)
FBP489614(1)	96"	48"	1/4"	1 Side Finish (Vertical Grain)
BP48341214	48"	34-1/2"	1/4"	1 Side Finish



BP48341214

End Decorative Doors

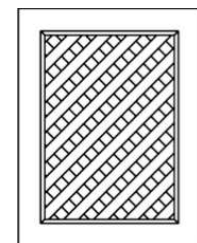
Item#	Width	Height
EPW1230D	11-1/2"	29-5/16"
EPW1236D	11-1/2"	35-5/16"
EPW1242D	11-1/2"	41-5/16"
EPB24D	23-3/4"	29-5/16"



EPXXD

Lattice Doors

Item#	Width	Height
SB30B-ND-SP	14-3/4"	22-7/8"
SB33B-ND-SP	16-1/4"	22-7/8"
SB36B-ND-SP	17-3/4"	22-7/8"



SBXXB-ND-SP

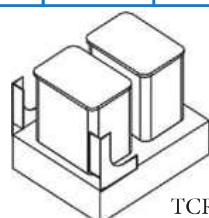
	Top Door	Top Door	Middle/Bottom Door	Middle/Bottom Door
	Width	Height	Width	Height
EPWP2484D	23-3/4"	29-5/16"	23-3/4"	49-1/4"
EPWP2490D	23-3/4"	35-5/16"	23-3/4"	49-1/4"
EPWP2496D	23-3/4"	41-5/16"	23-3/4"	49-1/4"

Pull Outs

Trash Can Pull Out

Item#	Width	Height	Depth	Cabinet Fits
TCR21-2	16 5/8"	16 5/16"	21"	Fits B18 or B21

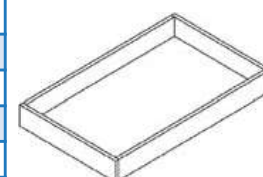
Full extension, not soft closing.
 Includes 2 plastic cans, approx 29qt capacity.



TCR21-2

Roll Out Trays

Item#	Width	Height	Depth
15RT-DR	11"	2-7/8"	21"
18RT-DR	14"	2-7/8"	21"
24RT-DR	20"	2-7/8"	21"
27RT-DR	23"	2-7/8"	21"
30RT-DR	26"	2-7/8"	21"
33RT-DR	29"	2-7/8"	21"
36RT-DR	32"	2-7/8"	21"



XXRT-DR



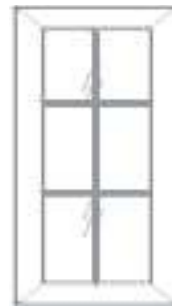
Spec Sheet Glass Doors and Range Hoods

Glass Doors

Item	Width	Height
W1530GD (1pc)	14-1/2"	29-5/16"
W1530MGD (1pc)	14-1/2"	29-5/16"
W1830GD (1pc)	17-1/2"	29-5/16"
W1830MGD (1pc)	17-1/2"	29-5/16"
W2430BGD (2PC)	11-3/4"	29-5/16"
W2430BMGD (2PC)	11-3/4"	29-5/16"
W3030BGD (2pcs/set)	14-11/16"	29-5/16"
W3030BMGD (2pcs/set)	14-11/16"	29-5/16"
W3630BGD (2pcs/set)	17-11/16"	29-5/16"
W3630BMGD (2pcs/set)	17-11/16"	29-5/16"
WDC2430GD (1pc)	14-15/16"	29-5/16"
WDC2430MGD (1pc)	14-15/16"	29-5/16"
W1536GD (1pc)	14-1/2"	35-5/16"
W1536MGD (1pc)	14-1/2"	35-5/16"
W1836GD (1pc)	17-1/2"	35-5/16"
W1836MGD (1pc)	17-1/2"	35-5/16"
W2436BGD (2PC)	11-3/4"	35-5/16"
W2436BMGD (2PC)	11-3/4"	35-5/16"
W3036BGD (2pcs/set)	14-11/16"	35-5/16"
W3036BMGD (2pcs/set)	14-11/16"	35-5/16"
W3636BGD (2pcs/set)	17-11/16"	35-5/16"
W3636BMGD (2pcs/set)	17-11/16"	35-5/16"



No Mullion



With Mullion

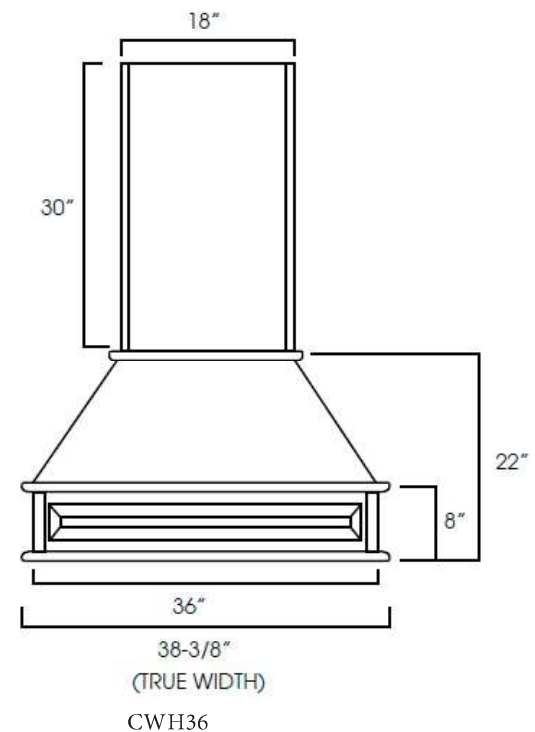
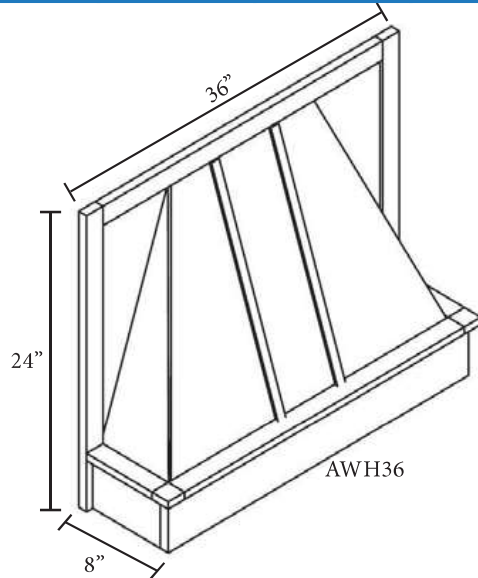
Item	Width	Height
WDC2436GD (1pc)	14-15/16"	35-5/16"
WDC2436MGD (1pc)	14-15/16"	35-5/16"
WDC273615GD (1pc)	14-15/16"	35-5/16"
WDC273615MGD (1pc)	14-15/16"	35-5/16"
W1542GD (1pc)	14-1/2"	41-5/16"
W1542MGD (1pc)	14-1/2"	41-5/16"
W1842GD (1pc)	17-1/2"	41-5/16"
W1842MGD (1pc)	17-1/2"	41-5/16"
W2442BGD (2PC)	11-3/4"	41-5/16"
W2442BMGD (2PC)	11-3/4"	41-5/16"
W3042BGD (2pcs/set)	14-11/16"	41-5/16"
W3042BMGD (2pcs/set)	14-11/16"	41-5/16"
W3642BGD (2pcs/set)	17-11/16"	41-5/16"
W3642BMGD (2pcs/set)	17-11/16"	41-5/16"
WDC2442GD (1pc)	14-11/16"	41-5/16"
WDC2442MGD (1pc)	14-11/16"	41-5/16"
WDC274215GD (1pc)	14-11/16"	41-5/16"
WDC274215MGD (1pc)	14-11/16"	41-5/16"

Bridge Cabinet Glass Doors

Item#	Width	Height
W1512GD	14-1/2"	11-5/15"
W1812GD	17-1/2"	11-5/16"
W2412GD	11-3/4"	11-5/16"
WDC2412GD	14-11/19"	11-5/16"
W3012BGD (2pc)	14-11/16"	11-5/16"

Range Hoods

Item#	Width	Height	Depth
AWH36	36"	24"	8"
CWH36	38-3/8"	22"+30"	20-1/2"





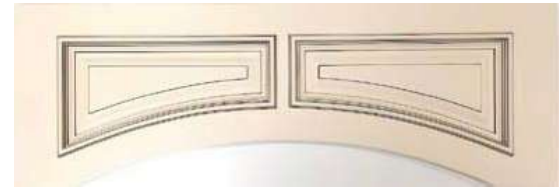
Spec Sheets Valances, Moldings, Corbels and Appliques

Valances

Item#	Width	Height	Details
VAS48	48"	4-5/8"	Trimmable 6" on both sides
VAD3612	36"	12"/8"	Trimmable 2-1/2" on both sides
VAD4212	42"	12"/8"	Trimmable 2-1/2" on both sides
VAD4812	48"	12"/8"	Trimmable 2-1/2" on both sides
VAL48B	48"	6"	Trimmable 6" on both sides
VAL54B	54"	6"	Trimmable 6" on both sides
VAL48S	48"	6"	Trimmable 6" on both sides
VAL54S	54"	6"	Trimmable 6" on both sides



VAS48



VADXX12



VALXXB



VALXXS

Corner Moldings

Item#	Thickness	Height	Length
SC1-3	1/4"	3/4"	96"
SC4	3/4"	3/4"	96"
SC5	1/4"	3/4"	96"
SC6	1/2"	3/4"	96"
SC8	1/4"	3/4"	96"



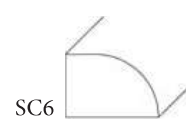
SC1-3



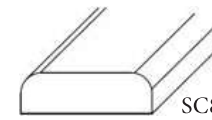
SC4



SC5



SC6



SC8

Crown Moldings

Item#	Height	Length	Details
CM96 (Plain)	2-1/2"	96"	
CM96-4 (Plain)	4-1/2"	96"	
CM96B-4 (Egg&Dart)	4-1/2"	96"	Egg & dart attached
CM96C-4 (Rope)	4-1/2"	96"	Rope attached
CM96E-4	2-5/8"	96"	Straight
CM96H-4	4"	96"	Large Cove Detail
CM96K-4 (Coved)	4"	96"	



CM96



CM96-4



CM96B-4



CM96C-4



CM96E-4



CM96H-4



CM96K-4

Corbels & Appliques

Item#	Width	Height	Depth
DOA	19-7/8"	4-1/4"	N/A
CORBEL56	3"	6"	4"
CORBEL57	3"	9"	6"
CORBEL58	3"	9"	6"
CORBEL59	3"	9"	6"
CORBEL60S	5"	10"	5"
CORBEL60L	7"	17"	7"
CORBEL75S	3-3/4"	6-1/2"	3-1/2"
CORBEL75M	5-1/4"	12-1/2"	4-1/2"
CORBEL75L	3-1/2"	12-1/2"	8"



DOA



CORBEL59



CORBEL58



CORBEL56
CORBEL57



CORBEL60X



CORBEL75X



Spec Sheets Fillers, Toe Kick, Moldings, Legs

Light Rail Moldings

Item#	Thickness	Height	Length
LRM8	1-1/2"	1"	96"
TLRM8	1-1/2"	2-1/4"	96"



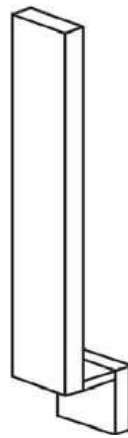
LRM8



TLRM8

Wall and Base Fillers

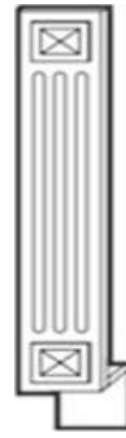
Item#	Width	Length	Thickness
WF3-3/4	3"	30"	3/4"
WF336-3/4	3"	36"	3/4"
WF342-3/4	3"	42"	3/4"
WF384-3/4	3"	84"	3/4"
WF396-3/4	3"	96"	3/4"
WF6-3/4	6"	30"	3/4"
WF642-3/4	6"	42"	3/4"
WF696-3/4	6"	96"	3/4"
BF3-3/4	3"	34-1/2"	3/4"
BF6-3/4	6"	34-1/2"	3/4"
A30WF	3"	30"	3/4"
A36WF	3"	36"	3/4"
A42WF	3"	42"	3/4"
A3BF	3"	34-1/2"	3/4"
A6BF	6"	34-1/2"	3/4"



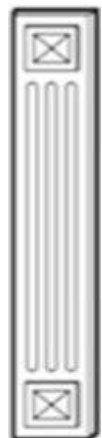
BFX-3/4



WFX-3/4



AXBF



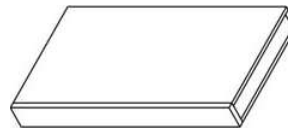
AXWF

Boxed Columns

Item	Thickness	Height	Depth
CLB334-1/2	3"	34-1/2"	24"
CLW330	3"	30"	15"
CLW336	3"	36"	15"
CLW342	3"	42"	15"
CLW396	3"	96"	27"



CLXXXX



CLXXXX (as a floating shelf)

Trimable to custom heights and depths.

Floating Shelves

Item#	Thickness	Depth	Length
FLS24-XXXX	2-1/2"	10"	24"
FLS30-XXXX	2-1/2"	10"	30"
FLS36-XXXX	2-1/2"	10"	36"
FLS42-XXXX	2-1/2"	10"	42"



Toe Kick

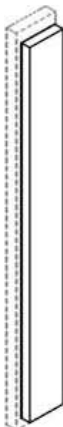
Item#	Thickness	Height	Length
TK8	1/4"	4-1/2"	96"



TK8

Overlay Fillers

Item#	Width	Length	Thickness
OLF330	2-1/2"	29-1/4"	3/4"
OLF336	2-1/2"	35-1/4"	3/4"
OLF342	2-1/2"	41-1/4"	3/4"
OLF630	5-1/2"	29-1/4"	3/4"
OLF636	5-1/2"	35-1/4"	3/4"
OLF642	5-1/2"	41-1/4"	3/4"
OLF384	2-1/2"	78-3/4"	3/4"
OLF390	2-1/2"	84-3/4"	3/4"
OLF396	2-1/2"	90-3/4"	3/4"



OLFXXX

Base Board Molding

Item#	Thickness	Height	Length
BM4-1/2"-5/8"	5/8"	4-1/2"	96"



BM4-1/2"-5/8"



Spec Sheets Decor Legs

Decor Legs

Item#	Width	Height	Thickness	Comments
TP3/WF34-1/2"	3"	34-1/2"	3"	Full leg. Comes with Wall Filler 3"x34-1/2"
LEG28 B3x3	3"	36-1/2"	3"	Full leg. Must trim 2" off top or bottom.
LEG75 B3x3	3"	36-1/2"	3"	Full leg. Must trim 2" off top or bottom.
LEG81	3"	34-1/2"	3"	Full Leg
LEG82	3"	34-1/2"	1-1/2"	1/2 Leg.
LEG83	3"	34-1/2"	1-1/2"	1/2 Leg
POLE28-B3	3"	36-1/2"	3"	Must trim 2" off top or bottom
POLE28-W330	3"	30"	2-1/4"	Trimable 2" off top and bottom
POLE28-W336	3"	36"	2-1/4"	Trimable 2" off top and bottom
POLE28-W342	3"	42"	2-1/4"	Trimable 2" off top and bottom
POLE28-T384	3"	84"	2-1/4"	Trimable to different length & depth
POLE28-T390	3"	90"	2-1/4"	Trimable to different length & depth
POLE28-T396	3"	96"	2-1/4"	Trimable to different length & depth
POLE75-B3	3"	36-1/2"	3"	Must trim 2" off top or bottom
POLE75-W330	3"	30"	2-1/4"	Trimable 2" off top and bottom
POLE75-W336	3"	36"	2-1/4"	Trimable 2" off top and bottom
POLE75-W342	3"	42"	2-1/4"	Trimable 2" off top and bottom
POLE75-T384	3"	84"	2-1/4"	Trimable to different length & depth
POLE75-T390	3"	90"	2-1/4"	Trimable to different length & depth
POLE75-T396	3"	96"	2-1/4"	Trimable to different length & depth



TP3/WF34-1/2"



LEG28 B3x3



LEG75 B3x3



LEG81



LEG82



LEG83



POLE28B



POLE28WF



POLE75B



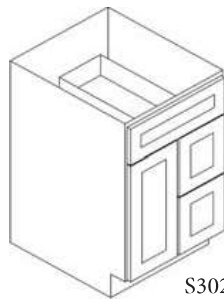
POLE75W



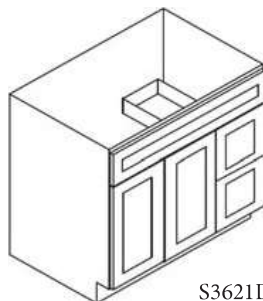
Spec Sheets Vanities

Vanities With Drawers

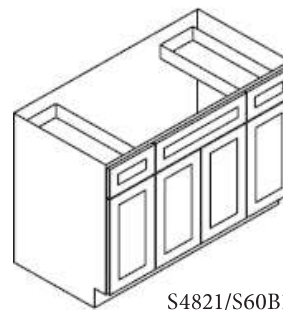
Item#	Width	Height	Depth	Door	Drawer	Drawer Width	Bowl
S3021DL-34-1/2"	30"	34-1/2"	21"	1	2	11-1/2"	Single
S3021DR-34-1/2"	30"	34-1/2"	21"	1	2	11-1/2"	Single
S3621BDL-34-1/2"	36"	34-1/2"	21"	2	2	11-1/2"	Single
S3621BDR-34-1/2"	36"	34-1/2"	21"	2	2	11-1/2"	Single
S4821B12D-34-1/2"	48"	34-1/2"	21"	4	2	11-1/2"	Single
S6021B12D-34-1/2"	60"	34-1/2"	21"	4	2	11-1/2"	Single



S3021DR



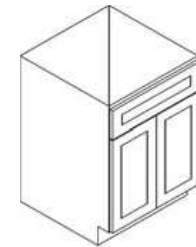
S3621DR



S4821/S60B12D

Vanities Without Drawers

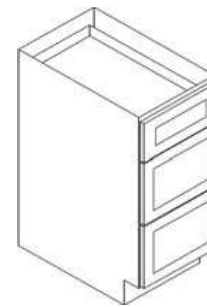
Item#	Width	Height	Depth	Door	Drawer	Bowl
S2421B-34-1/2"	24"	34-1/2"	21"	2	0	Single
S3021B-34-1/2"	30"	34-1/2"	21"	2	0	Single
S3621B-34-1/2"	36"	34-1/2"	21"	2	0	Single



S24,S30,S36

Vanity Drawer Bases

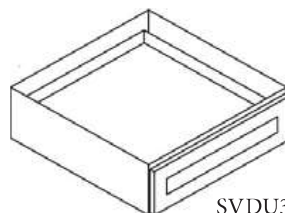
Item#	Width	Height	Depth	Door	Drawer
SVB1221-34-1/2"	12"	34-1/2"	21"	0	3
SVB1521-34-1/2"	15"	34-1/2"	21"	0	3
SVB1821-34-1/2"	18"	34-1/2"	21"	0	3



SVB

Desk Drawer (Makeup Sink)

Item#	Width	Height	Depth
SVDU3021-7"	30"	7"	20"



SVDU3021-7"